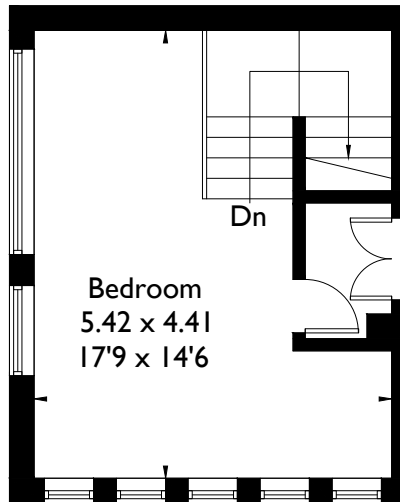



# Tudor Road, E9

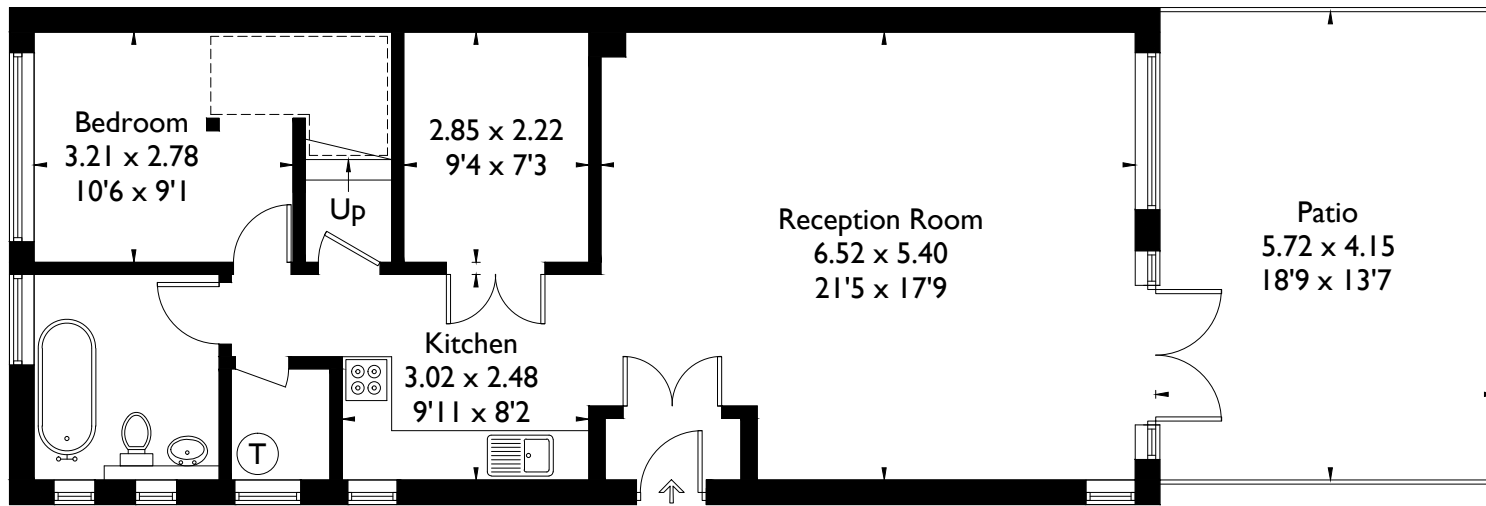


Approximate Gross Internal Area = 97.1 sq m / 1045 sq ft



 = Reduced headroom below 1.5m / 5'0

## First Floor



## Ground Floor

FLOORPLANZ © 2018 0203 9056099 Ref: 223192

This plan is for layout guidance only. Drawn in accordance with RICS guidelines. Not drawn to scale unless stated. Windows & door openings are approximate. Whilst every care is taken in the preparation of this plan, please check all dimensions, shapes & compass bearings before making any decisions reliant upon them.