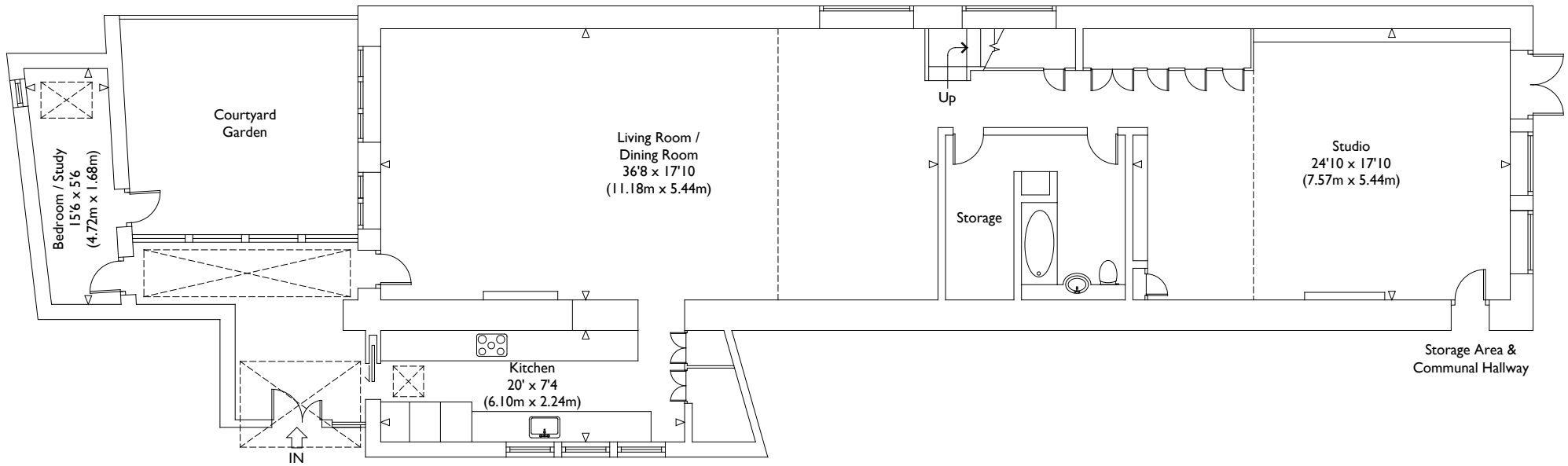


Mezzanine



Ground Floor

Illustration for identification purposes only, measurements are approximate, not to scale.

VIEWING ARRANGEMENTS  
Telephone: +44 (0)20 3795 5920  
Email: [viewings@themodernhouse.com](mailto:viewings@themodernhouse.com)

ST. OSWALDS PLACE, LONDON, SE11

Approximate Gross Internal Floor Area : 2306 sq ft / 214.2 sq m (Excluding Voids)

THE MODERN HOUSE